

118 Series Vanstone & Test Thermowells

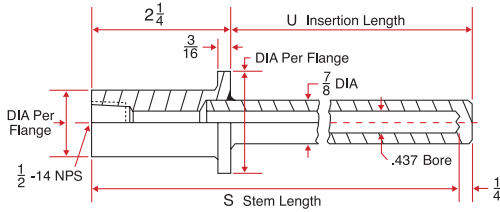


118 Vanstone & Test Wells

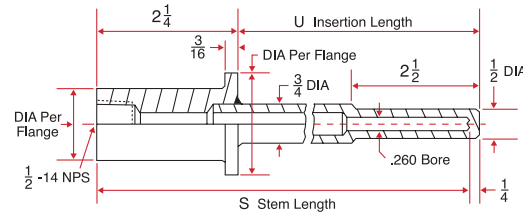
.260", .385", .437" Diameter Bore, 1/2"-14 NPS Internal Thread.

For use with: Digi-Stem 1/4" diameter with 1/2" NPT, (1181 Series) and 3/8" diameter with 1/2" NPT Probes (1182 Series). Also all sizes of various Mechanical or Electronic Probes and Liquid-in-Glass Thermometers.

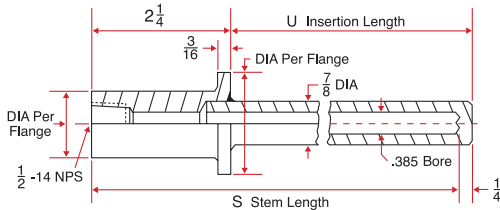
Note: Test Thermowells should be ordered with an attached cap and chain to prevent intrusion of debris when not in use.



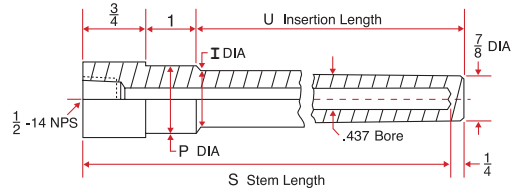
.437" Diameter Bore, Vanstone: Series 1180		
"S" Stem Length	"U" Insertion Length	Type Number
4"	2"	1180-004
6"	4"	1180-006
9"	7"	1180-009
12"	10"	1180-012
15"	13"	1180-015
18"	16"	1180-018
24"	22"	1180-024



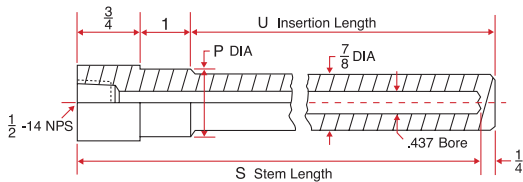
.260" Diameter Bore, Vanstone: Series 1181		
"S" Stem Length	"U" Insertion Length	Type Number
4"	2"	1181-004
6"	4"	1181-006
9"	7"	1181-009
12"	10"	1181-012
15"	13"	1181-015
18"	16"	1181-018
24"	22"	1181-024



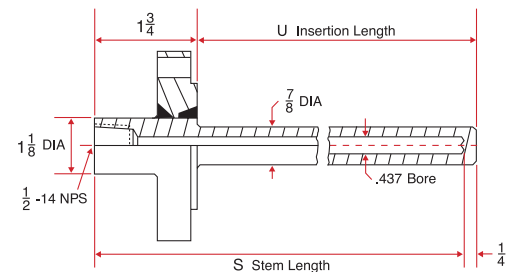
.385" Diameter Bore, Vanstone: Series 1182		
"S" Stem Length	"U" Insertion Length	Type Number
4"	2"	1182-004
6"	4"	1182-006
9"	7"	1182-009
12"	10"	1182-012
15"	13"	1182-015
18"	16"	1182-018
24"	22"	1182-024



Heavy Wall Weld-In Test: Series 1183			
"S" Stem Length	"U" Insertion Length	"P" Diameter Nominal Pipe Size	
		3/4" - 1.050	1" - 1.315
6"	4-1/2"	1183-206	1183-306
9"	7-1/2"	1183-209	1183-309
12"	10-1/2"	1183-212	1183-312
15"	13-1/2"	1183-215	1183-315
18"	16-1/2"	1183-218	1183-318
24"	22-1/2"	1183-224	1183-324
"I" Dia		1"	1.065"



Weld-In Test: Series 1186			
"S" Stem Length	"U" Insertion Length	"P" Nominal Pipe Size	
		3/4" - 1.050	1" - 1.315
4"	2-1/2"	1186-204	1186-304
6"	4-1/2"	1186-206	1186-306
9"	7-1/2"	1186-209	1186-309
12"	10-1/2"	1186-212	1186-312
15"	13-1/2"	1186-215	1186-315
18"	16-1/2"	1186-218	1186-318
24"	22-1/2"	1186-224	1186-324



Flanged Test: Series 1187		
"S" Stem Length	"U" Insertion Length	Type Number
4"	2-1/2"	1187-004
6"	4-1/2"	1187-006
9"	7-1/2"	1187-009
12"	10-1/2"	1187-012
15"	13-1/2"	1187-015
18"	16-1/2"	1187-018
24"	22-1/2"	1187-024

Note: For Prints, Built-up Wells or Tapered Shanks please contact factory

Specifications subject to change without notice.