

PALMER

Durable and corrosion resistant, our Stainless Steel gauges are made to provide maximum protection in harsh conditions.

All Stainless Steel Gauges Model 60SS - 6" Gauge

Durable and corrosion resistant, our Stainless Steel Gauges are made to provide maximum protection in harsh conditions.

FEATURES

- Built-In Over-Range and Under-Range Protection (60SS Dry)
- Reinforced Sector Improves Accuracy Over Life of Gauge
- Welded Socket to Case
- Removable Stainless Steel Restrictor
- Durable and corrosion resistant

Model 60SS Specifications

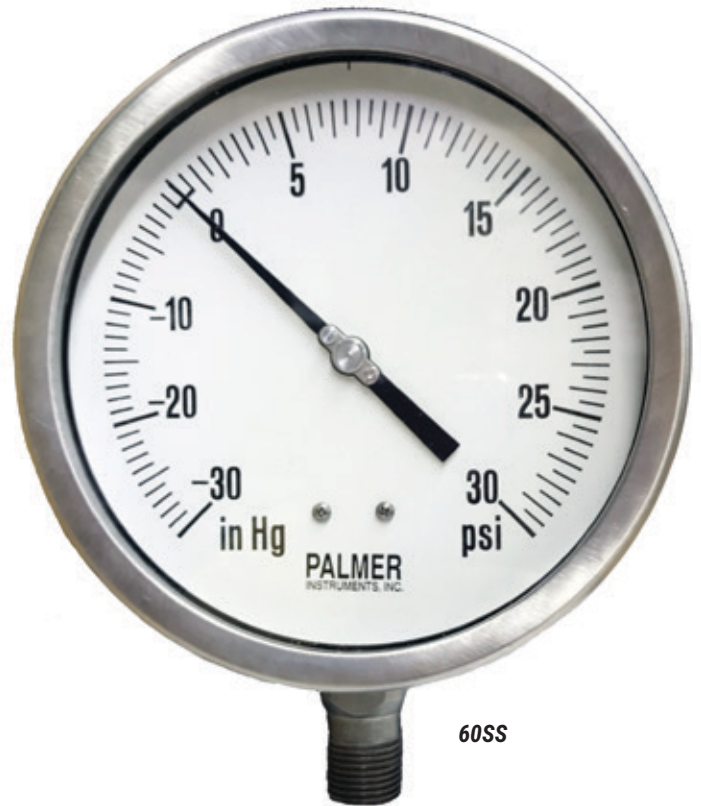
Case:	AISI 304 Stainless Steel in 6" (150mm) diameter. Case and socket are welded together
Fill:	Dry or Glycerin Filled. (Dry Gauges can be filled) Silicone Fill Optional.
Ring:	AISI 304 Polished Stainless Steel Bayonet Bezel
Window:	Safety Glass Standard
Socket:	Removable Stainless Steel Restrictor
Connection:	1/2" NPT. 1/4" Optional
Bourdon Tube:	AISI 316 Stainless Steel. All 6" Gauges less than 1000 PSI use a C-tube configuration. All others use a spiral tube
Movement:	304 Stainless Steel
Pointer:	Balanced Black Aluminum. Micrometer adjustable
Dial:	White Aluminum with black markings in accordance with ASME B40.1 -2005
Accuracy:	±1% on ranges below 10,000 ±1.6% on ranges 15,000 and above
Range Availability:	PSI, Metric, and Dual Scales.
Ambient Temperature:	Dry: -40° to 185°F (-40° to 85°C) Glycerin Filled: 60° to 150°F (15° to 65°C) Silicone Filled: -50° to 150°F (-45° to 65°C)
Process Temperature Limits:	-40° to 176°F (-40° to 80°C). 100°C MAX
Overpressure Limits:	<ul style="list-style-type: none"> • 30% for ranges up to 870 PSI (60 Bar) • 25% for ranges from 870 to 1400 PSI (100 Bar) • 15% for ranges above 1400 PSI (100 Bar) Overpressure in excess of these values may affect calibration but will not damage the movement due to the mechanical stops. (60SS Dry only)

Note: Autoclave Fitting - if desired, MUST be specified with Code C at time of order, must specify Male or Female fitting.

Blow-Out Disc - if desired, is available for Dry or Glycerin Filled Gauges only. MUST be specified with Code Y at time of order.

Contact Customer Service for availability and Lead Times.

Specifications subject to change without notice. Minimum order quantities may apply.



60SS

If a Solid Front Gauge is desired, please see Palmer Gauge 45TS.



Dry



Wet



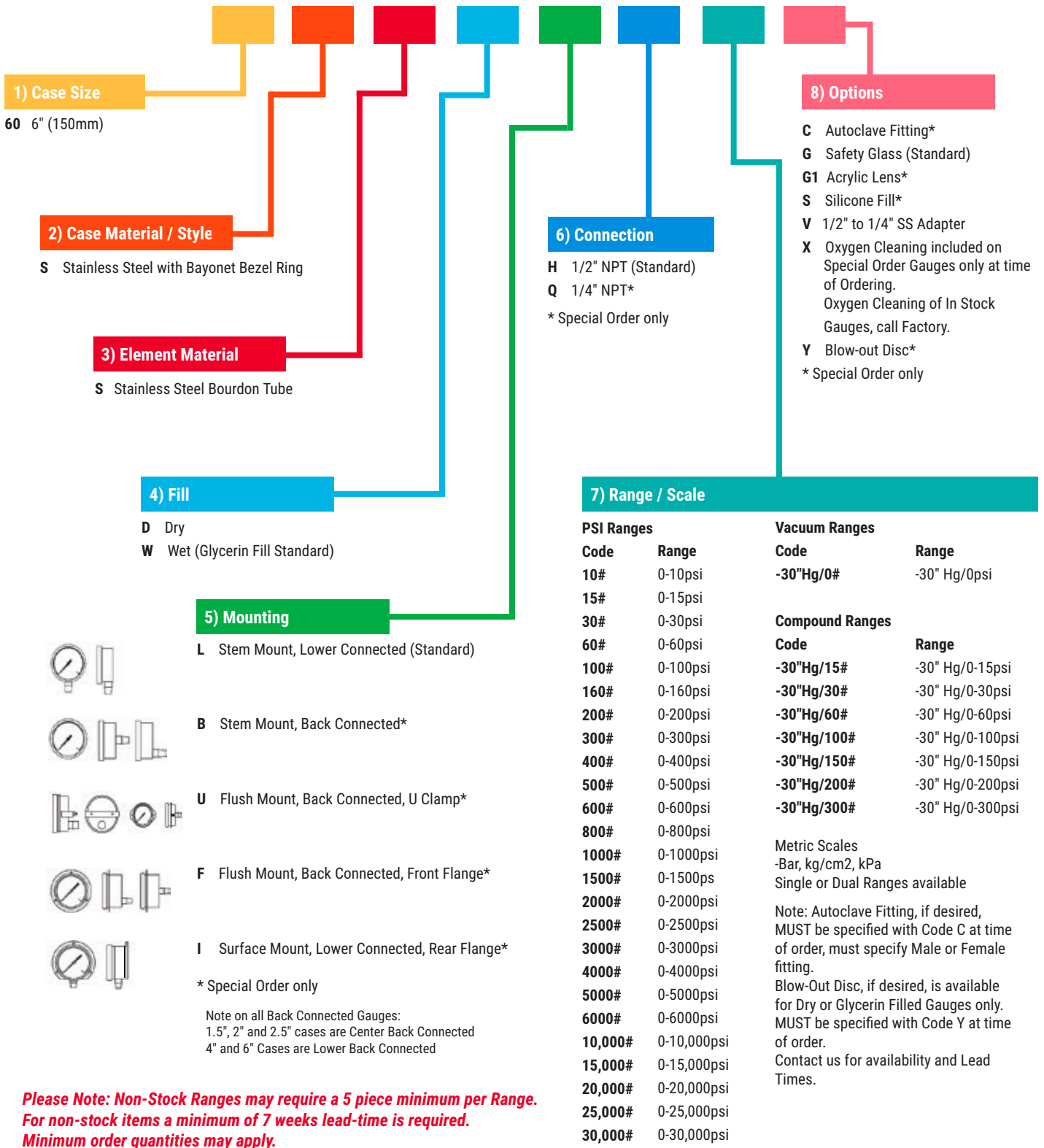
Dry



Wet

Palmer Wahl
BEYOND THE SCALE

All Stainless Steel Gauges Model 60SS Ordering Guide



Example of a typical pressure gauge part number configuration:

60	S	F	D	L	H	600#	
Case Size	Case Material/Style	Element Material	Fill	Mounting	Connection	Range/Scale	Options

Specifications subject to change without notice. Minimum order quantities may apply..